

PonleumPro
Vinyl sheet flooring



 **TAIHO**
MADE IN JAPAN

Item



·Merits and composition

·Functionality

·Construction images

Recommended places of use

Place Type	Balcony, corridor	Store	Restaurant	Retirement home	Hospital	School	Factory
FC				○	○		
MF		○	○	○	○	○	
KM		○	○	○	○	○	
FA		○	○	○	○	○	
VA							○
FW						○	
FR				○	○		
NNP	○						

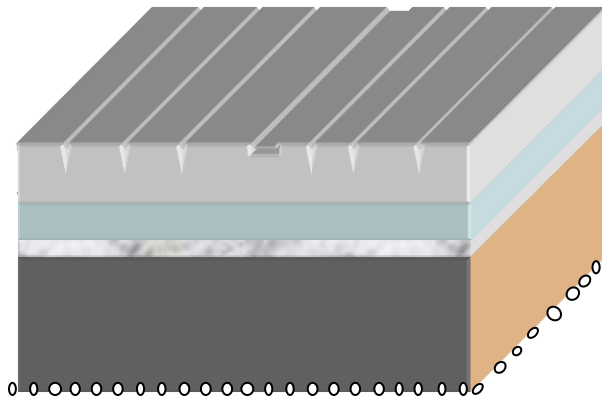
Functionality

Merit Type	Cushioning	Wear resistant	Discoloration resistant	Anti-slip	Anti bacterial	Antifungal	Easy maintenance
FC	○					○	
MF		◎			◎		
KM		◎					○
FA		◎			◎		
VA		◎					
FW		◎			◎		
FR		◎			◎		
NNP		◎	○	○			

Vinyl sheet flooring

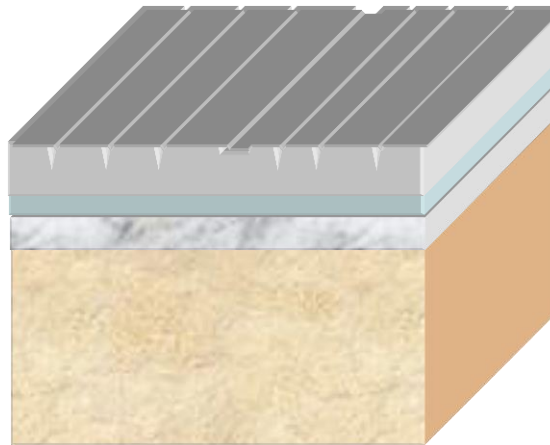
Ponleum Pro series

KM/MF/FA



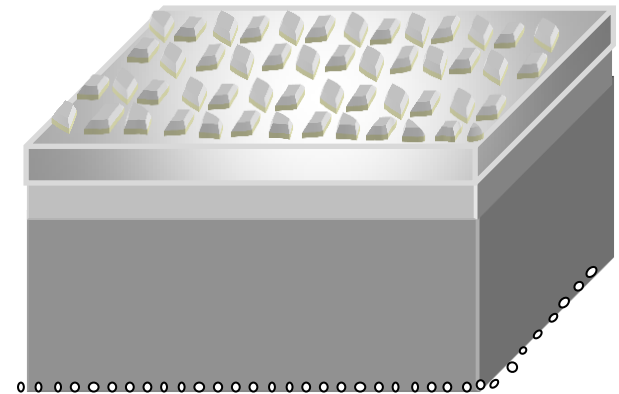
2. 0mm

FR



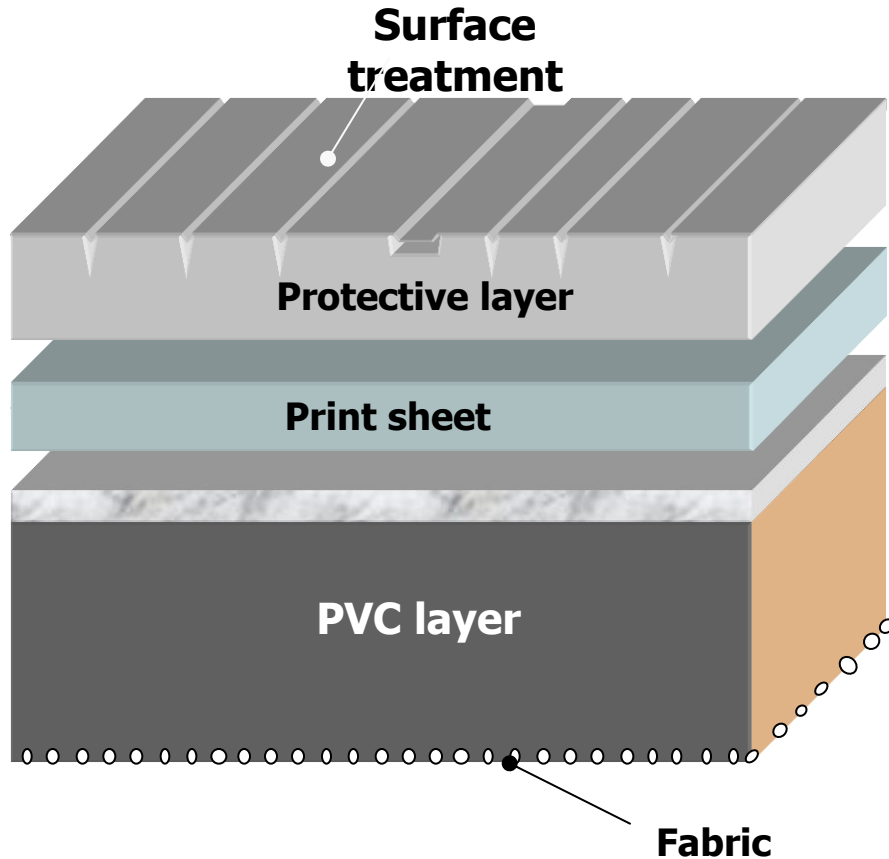
2. 8mm

NNP



2. 5mm

KM/MF/FA



Patterned surface layer.

The surface treatment protects against damage and dirt.

High antibacterial properties.

Wide variation of designs to fit your needs.

Easy installation.

The laminated surface and fabric allows for an easy installation process.

Wear resistant

Dirt resistant

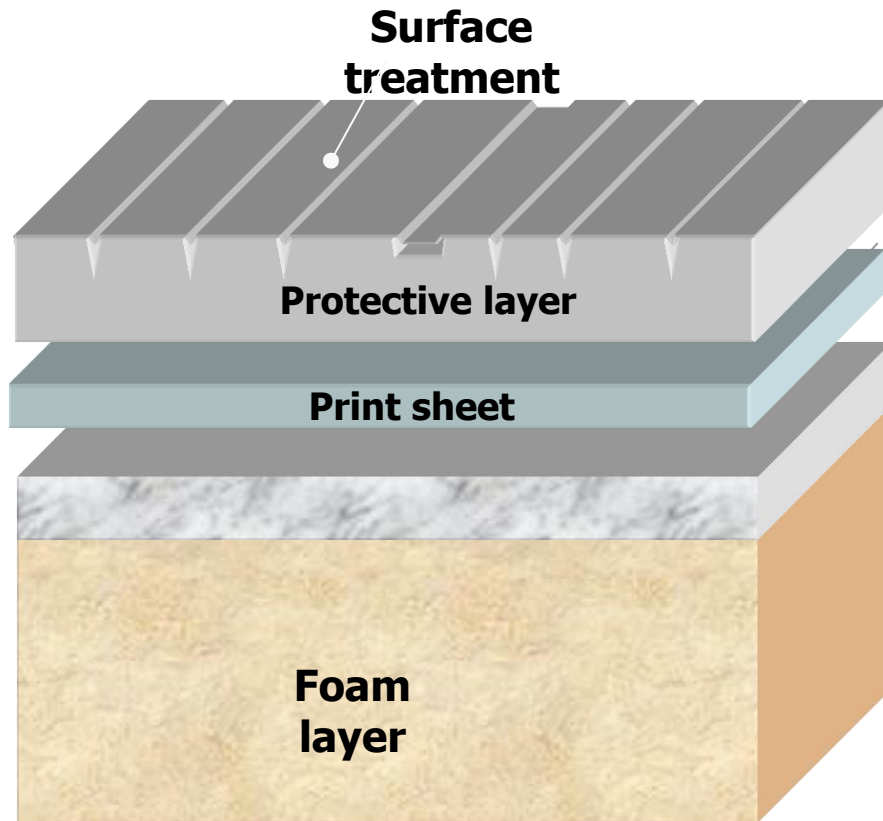
Chemical resistant

Antibacterial

KM/MF/FA



FR



Recommended places of use includes retirement homes and kindergartens.

Patterned surface layer.

The surface treatment protects against damage and dirt.

Cushioning.

The foam layer allows for a more pleasant feeling and is impact resistant.

Antibacterial.

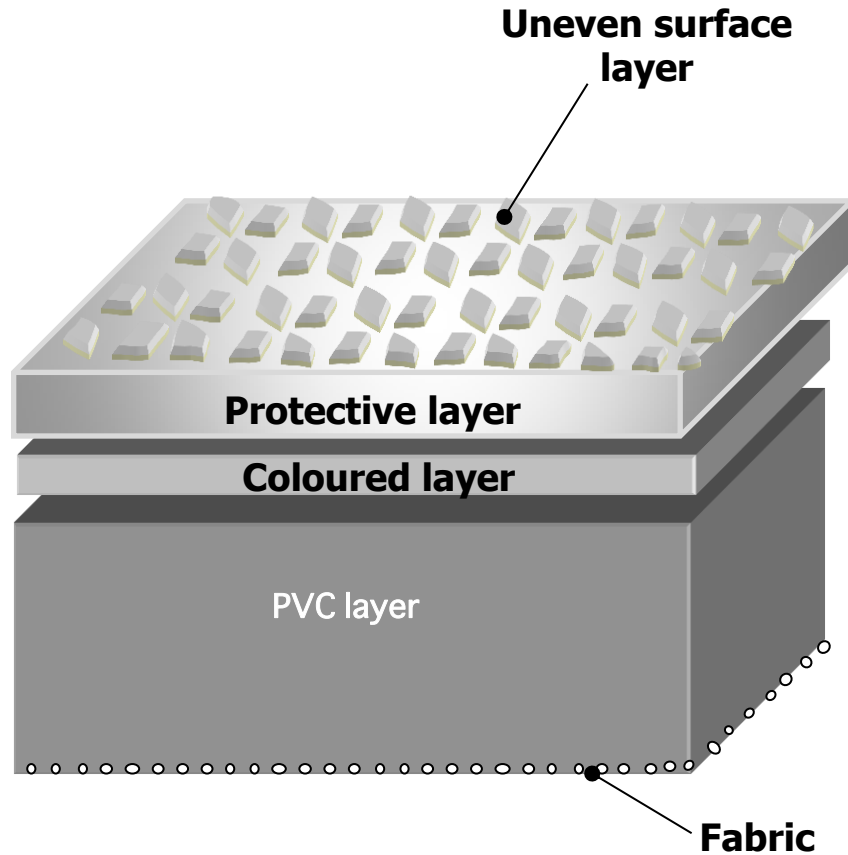
Durable and easy to maintain.

Wear resistant	Dirt resistant
Chemical resistant	Antibacterial

FR



NNP



For balconies and corridors.

The uneven surface allows for great anti-slip properties.

The anti-slip resistant is the same whether it is wet or dry.

Strong against discolouration.

Has passed test in light resistance test chambers.

Easy installation.

The laminated surface and fabric allows for an easy installation process.

Wear resistant	Discoloration resistant
Anti-slip	Green product

Merits of NNP



Anti-slip

Safe and can be used even during heavy rain.

Wear resistant

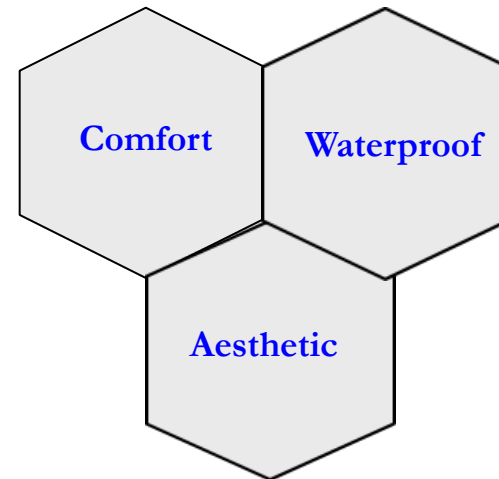
Can be walked on with shoes on.

Easy maintenance

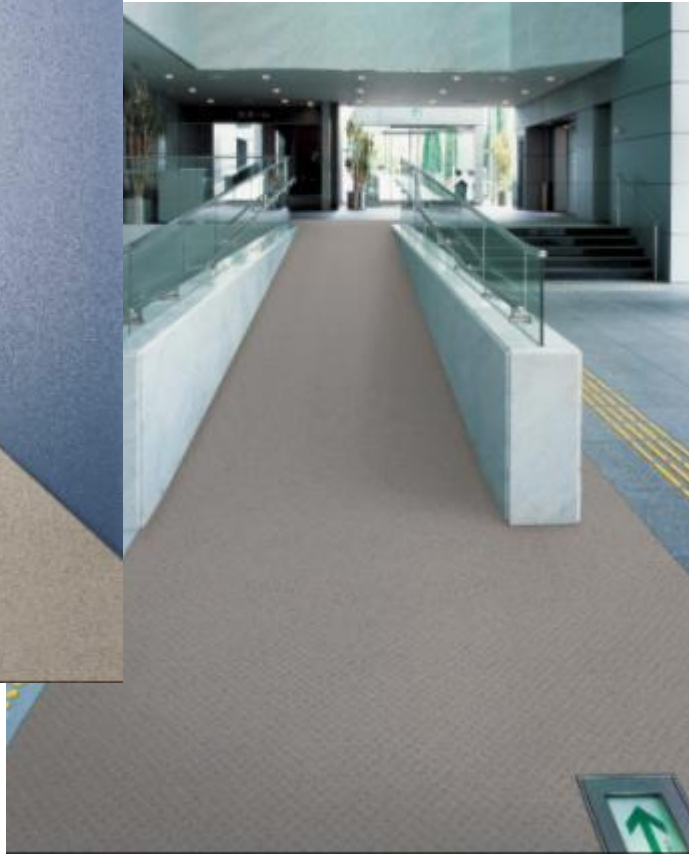
Easy to clean of any dirt that comes on it.

Weatherability

Doesn't discolorate due to strong sunshine and is strong against rain during the rainy season.



NNP





Usage



Bathroom



Play room



Living room



Entrance



Balcony



Kindergarten

Living room



Bathroom



Shop



Facilities

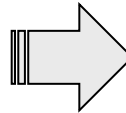
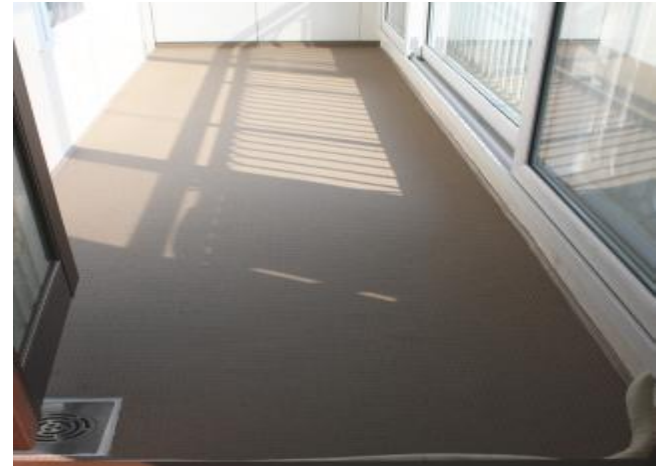


Mansion/Bathroom



Mansion/Balcony

(Before→ After)



Caution

- ◆ Wipe of any water or oil from the floor as quickly as possible.
- ◆ Also wipe of any detergents, colouring treatments etc. as quickly as possible.
- ◆ Don't drag any heavy or pointy objects on the floor.
- ◆ Keep free from fires and lightened cigarettes.
- ◆ Can become discolored because of some types of rubber.
- ◆ Preservatives in the subfloor can cause discoloration.
- ◆ Can become discolored because of the furnitures used on it.
- ◆ Using adhesive tape on it can also cause discoloration.

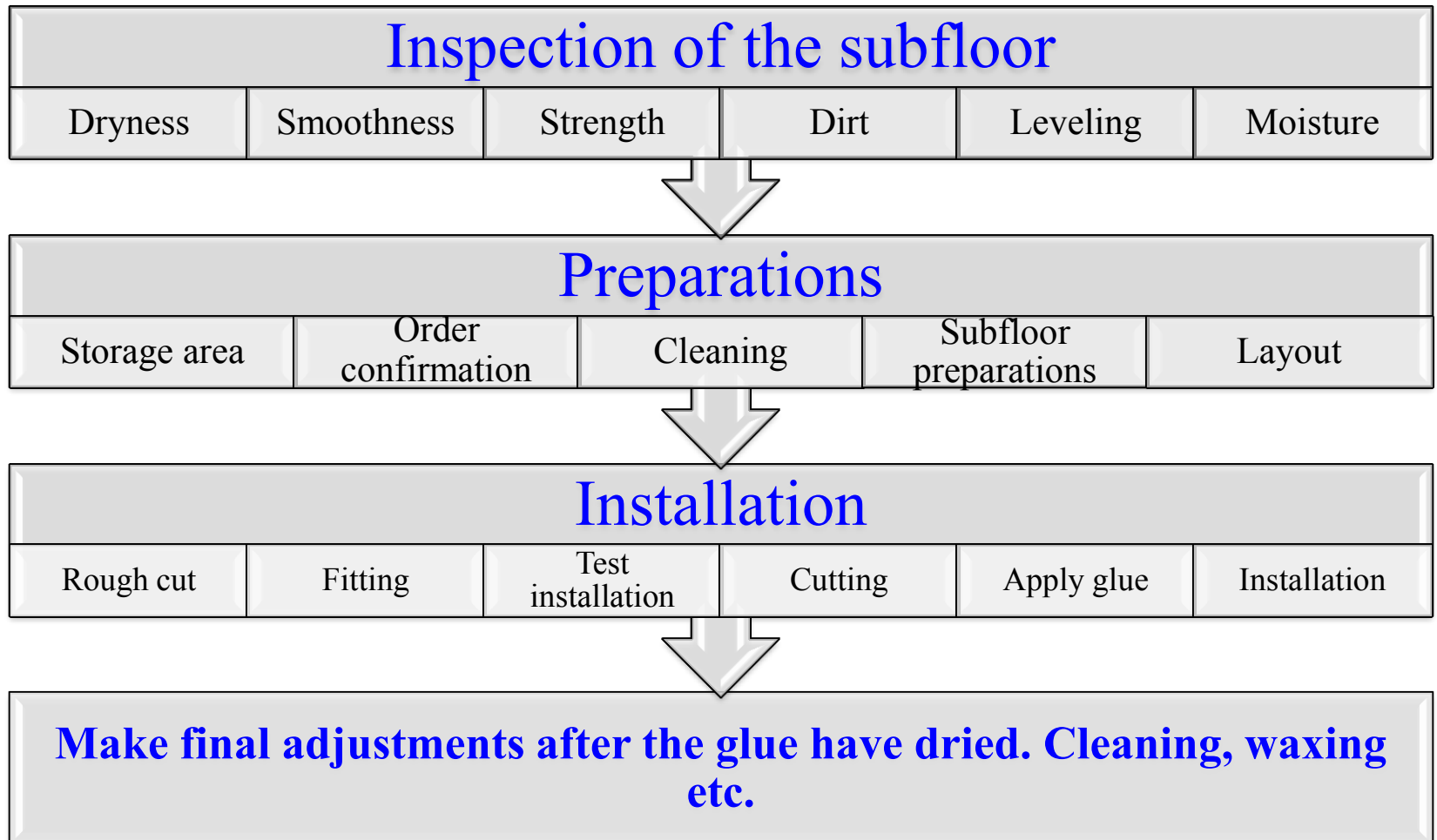
Discoloration due to hair colouring products.



Damage due to dragging a heavy object.



Installation process



To think about during installation 1

©Moisture in the subfloor

It is important to know that any moisture in the subfloor will affect PonleumPro. You can check for moisture by placing a sheet of polyethylene and paper on the floor for a few hours and check if there is any moisture on it the next day.

*** If moisture is found we strongly recommend to wait with the installation.**

To think about during installation 2

©Urethane resin based adhesives are recommended.

Moisture cure adhesive.

©Problems with subfloor adjustment.

The subfloor has to be flat or there is a chance that it will damage the vinyl floor after installation due to stretching etc. Also make sure that the subfloor is strong enough to sustain heavy weights.

If using self-leveling material or putty it is recommended that you wait around 10 days before installing PonleumPro in order to be 100% sure that it is completely dry.

To think about during installation 3

©About notched edge spreader.

Use a notched spreader with less than 5mm depth when applying the glue. If the depth is more than 5mm there is a risk that the adhesives will damage the floor in the future.

©After installation is finished look for any curling, air pockets, dirt or other irregularities and adjust accordingly. Don't use any heavy objects on the floor until the glue has completely dried.